



GAT MONTHLY MEMBERSHIP PROGRESS REPORT

Results as of: 6/30/2024

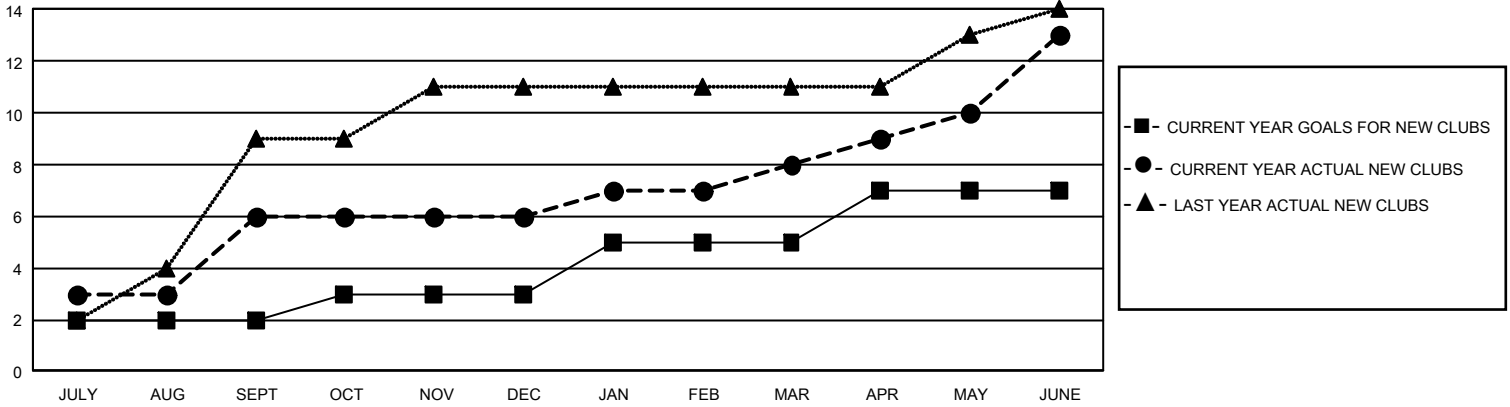
GMT Constitutional Area 5 - E, Group P

REPORT DOES NOT INCLUDE CLUBS IN UNDISTRICTED AREAS.

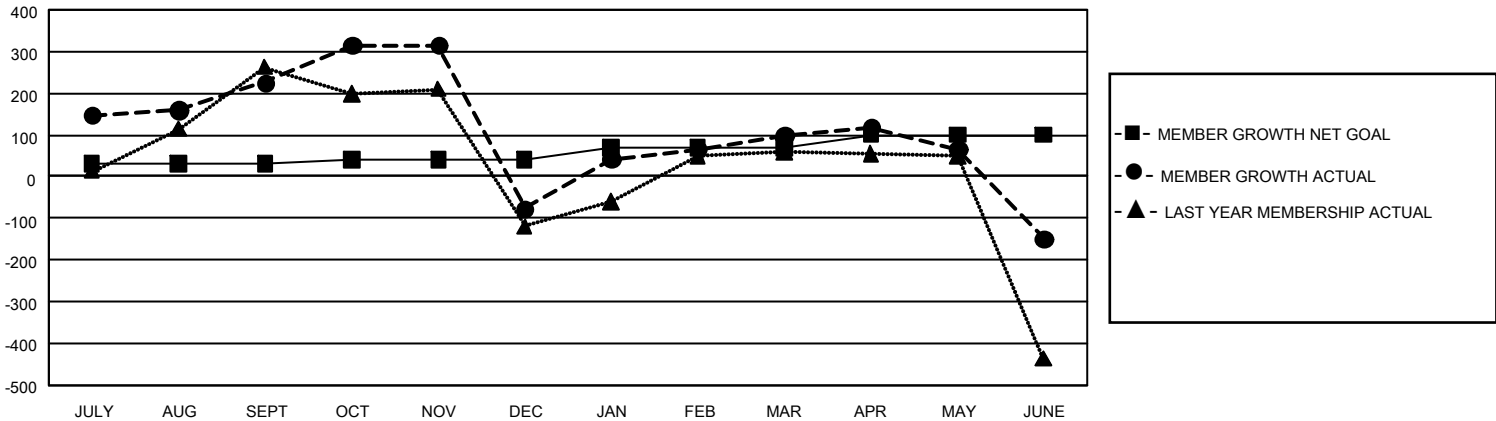
Clubs			
RESULTS FOR 2023-2024			
QUARTER	NEW CLUB GOAL	NEW CLUBS	DROPPED CLUBS
JULY/AUG/SEPT	6	6	3
OCT/NOV/DEC	3	0	5
JAN/FEB/MAR	6	2	4
APR/MAY/JUNE	6	5	2

Members			
RESULTS FOR 2023-2024			
QUARTER	MEMBER GROWTH NET GOAL	MEMBER GROWTH ACTUAL	DROPPED MEMBERS ACTUAL (including transfers)
JULY/AUG/SEPT	30	392	135
OCT/NOV/DEC	10	204	489
JAN/FEB/MAR	30	243	53
APR/MAY/JUNE	30	348	556

GOALS AND ACTUAL NEW CLUBS CUMULATIVE



GOALS AND ACTUAL MEMBERS CUMULATIVE



DROPPED CLUBS: 14	192 CLUBS OF 317 ADDED 1 OR MORE NEW MEMBERS	GENDER DISTRIBUTION	
		MALE 3,197 (46.82%)	FEMALE 3,631 (53.18%)
DROPPED MEMBERS		NON BINARY 0 (0.00%)	PREFER NOT TO ANSWER 0 (0.00%)
DECEASED 40	CLICK HERE FOR CUMULATIVE MEMBERSHIP DATA	TOTAL FAMILY UNIT MEMBERS 502	
CLUB CANCELLED 73		FAMILY MEMBERS PAYING HALF DUES 269	
OTHER 1,120			
TOTAL 1,233			